



**INTERNATIONAL JOURNAL OF
PHARMACEUTICAL SCIENCES**
[ISSN: 0975-4725; CODEN(USA): IJPS00]
Journal Homepage: <https://www.ijpsjournal.com>



Review Article

To Formulate and Evaluate Poly Herbal Cosmetic Scrub using Natural Ingredient

Virbhadrha Kale*, Vaishnavi Dhandhe, Dulare I. Ali, Aishwarya Deshmukh, Rahul Bijwar

Jagadambha Institute of Pharmacy and Research College, Kalam

ARTICLE INFO

Published: 27 May, 2026

Keywords:

Herbal body scrub,
Exfoliation, Natural
cosmetics, Skin care
formulation, Evaluation
parameters.

DOI:

10.5281/zenodo.20403398

ABSTRACT

Herbal cosmetics are gaining wide popularity due to their natural origin, safety, and therapeutic benefits. The present study aimed to formulate and evaluate a herbal body scrub using natural ingredients possessing exfoliating, cleansing, moisturizing, and antioxidant properties. The herbal scrub was prepared using ingredients such as Aloe vera gel, neem powder, orange peel powder, coffee powder, beetroot powder, chia seeds, walnut shell powder, glycerin, rose water, lavender oil, and phenoxyethanol as preservative. The formulation was designed to remove dead skin cells, improve skin texture, and provide nourishment to the skin without causing irritation. The prepared formulation was evaluated for various physicochemical parameters including appearance, color, odor, texture, pH, spread ability, wash ability, consistency, grittiness, homogeneity, and stability. The pH of the formulation was found to be compatible with skin pH, indicating its suitability for topical application. The scrub showed good spread ability, adequate exfoliating action, and satisfactory cleansing properties. Stability studies revealed no significant changes in color, odor, or consistency during the storage period.

INTRODUCTION

The body scrub is one of the most popular skin cosmetics for men and women. This product is mainly used to exfoliate dead skin and open pores, resulting in clearer & more healthy skin. [1] Skin is the one of the largest organs of body. It serves as a major protective organ for other body parts. Skin

functions as a protective wrapper, keeping everything beneath it and keep safe from daily threats such as the harsh effects of sun, wind and pollution germ filled grime. [2,3] The skin supports its own ecosystem of microorganism, including yeast and bacteria, which cannot be removed by any amount of cleaning. Skin is also a

*Corresponding Author: Virbhadrha Kale

Address: Jagadambha Institute of Pharmacy and Research College, Kalam

Email ✉: tkale668@gmail.com

Relevant conflicts of interest/financial disclosures: The authors declare that the research was conducted in the absence of any commercial or financial relationships that could be construed as a potential conflict of interest.



sensory organ, which indicates the health of individual. It is consisting of material such as amino acid, lipid and carbohydrate etc. so that a balanced nutrition is required for skin to keep it glossy, clean and clear and healthy [4,5]. Cosmetics are defined as the products used for the purposes of cleansing, beautifying, promoting attractiveness or alternating the appearance. [6] The demand for herbal cosmetics is high nowadays due to its ability to act as cosmetics and drugs. Skin care products are important factor to improve the confidence in individuals. Women were thought to be the larger consumer of skin care products but in the present scenario men are equally concern about their look. [7] This concept about the beauty, look and attractiveness leads to the boom in this field. The cosmeceutical companies produce their

product based on the skin texture like men require special type of products due to the roughness of their skin than women. [8]

1.1 Ideal Properties of Scrub.

1. Non-toxic
2. Possess small gritty particles
3. Mild abrasive
4. Non-irritating
5. Non-sticky
6. Able to remove dead skin cells. [9]

1.2 Anatomy of the Skin

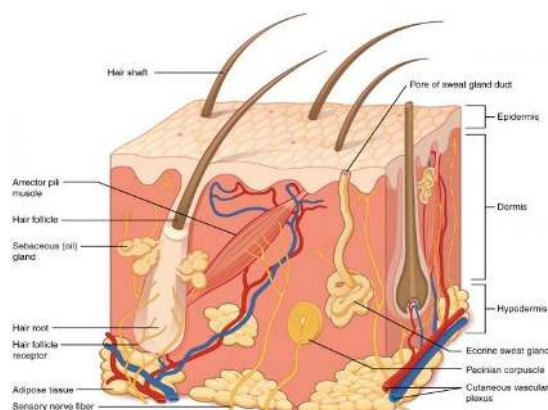


Fig.No.1 Structure Of Human Skin [10]

The skin is the largest organ of the human body, serving as a protective barrier against environmental damage, pathogens, and water loss. It is composed of three main layers: the epidermis, dermis, and hypodermis (subcutaneous tissue). The epidermis is the outermost layer made mainly of keratinocytes, providing waterproofing and protection. It also contains melanocytes, responsible for skin pigmentation. [10] Beneath the epidermis lies the dermis, a thicker layer containing connective tissue, blood vessels, nerves, sweat glands, and hair follicles. This layer provides elasticity, strength, and

thermoregulation. The hypodermis consists mostly of fat and connective tissue, cushioning internal organs and aiding temperature control. Together, these layers maintain body integrity and play vital roles in sensation, temperature regulation, and immune defence.

1.3 Types of skin layer

1. Epidermis:

Function: Serves as a protective waterproof barrier against pathogens, UV radiation, and fluid loss.

Structure: The thinnest layer, composed of multiple sub-layers (strata), including the outermost stratum corneum and the deepest stratum basale where cell division occurs.

2. Dermis:

Function: Provides skin with strength, support, and flexibility through its connective tissue and collagen fibres. It is also where sensory receptors, blood vessels, and nerves are located. **Structure:** The thickest layer, containing two main layers: the papillary layer and the reticular layer.

3. Hypodermis (Subcutaneous Tissue):

Function: Anchors the skin to the muscles and bones beneath, insulates the body, and acts as a shock absorber.

Structure: The deepest layer, composed of adipose (fat) tissue and connective tissue [11].

1.4 Benefits of scrubbing skin

1. Helps in removing dead cells: Facial or body scrubs are the cosmetic which goes beyond surface level to remove dead skin and reveal the healthy glowing skin below.

2. Free the skin from flakes: Loss of upper layer of skin (epidermis) is called as flaky skin. It gives rise to dry patches. Scrubbing your skin can help you to deal with flaky skin effectively. [12]

3. Deep cleaning of skin: Scrubbing your skin helps skin to get free from dirt, oil and sweat. Other cleansing like face wash facial cleansers cannot clean the skin. [13]

4. Thoroughly removing dust accumulated in the course of the skin, scrubbing does this work effectively. [14]

5. Clears blemishes: Accumulation of dead skin, can block the pores of skin and causes blemishes. Scrubbing frequently helps to remove dead skin and clears blemishes. [15]

6. Gives glow to Skin and Smooth texture: Scrubbing actually helps to give glow and smooth texture to skin.

7. Remove the acne scars: As scrubbing used to remove dead skin cells, it also removes the acne scars from skin. [16]

2. Material and Methods

2.1 Collection of herbs

The different plants were selected for the study having Skin care properties. All ingredients like Neem, walnut shell powder, Orange peel powder, Beetroot powder was obtained in their crude form from a local distributor. All the ingredients were powdered and sieved through sieve no. 120. All powdered ingredients were packed in moisture resistant, well closed containers. Coffee Powder and Poppy seeds procured from local market. Orange peel powder was prepared by grinding the airdried orange peel. The raw materials collected were given with their respective biological source and uses as ingredients in the skin care, even they are responsible to provide the nutrition to the skin. The selection of active ingredients for skin care powder is often based on the ability of the ingredient to prevent damage to the skin as well as to improve the quality of the skin by way of cleansing, nourishing and protecting it. [17]

2.2 Formulation Steps polyherbal Scrub





Fig. No.2 Liquid Phase



Fig. No.3 Solid Powder Phase

In order to formulate the face scrub these are the following steps:

- All the ingredients readily prepared were brought from the market.
- The ingredients were weighed according to the formula specified in the formulation.
- The weighed powder and other ingredients were mixed together to form formulations (phase 1).
- All the liquid ingredients were mixed in beaker (phase 2).
- Then both the phases (Phase 1 and Phase 2) were mixed thoroughly with the help of mortar and pestle to formulate the face scrub.
- Added Lavender oil for fragrance and phenoxyethanol as a Preservative to increase the shelf life of the product.
- The formulated face scrub was evaluated and then packed into a container & labelled. Table

No.1: Formulation of Herbal scrub 20 grams

Sr. No	Ingredients	F1	F2	F3	F4	F5	F6
1	Poppy seeds	1 gm	1 gm	1 gm	1 gm	1 gm	1 gm

2	Chia seeds	0.5 gm	0.5 gm	0.5 gm	0.5 gm	0.5 gm	0.5 gm
3	Coffee powder	2.5 gm	2.5 gm	2.5 gm	2.5 gm	2.5 gm	2.5 gm
4	Aloe Vera gel	3 gm	2.5 gm	2 gm	1.5 gm	1 gm	0.5 gm
5	Orange peel powder	2.5 gm	2 gm	2 gm	1 gm	1 gm	1 gm
6.	Walnut shell powder	1.8gm	2.3gm	2.8gm	2.2gm	1.7gm	2gm
7.	Neem powder	1.5 gm	1.5 gm	1.5 gm	1.5 gm	1.5 gm	1.5 gm
8.	Beetroot powder	0.5 gm	0.5 gm	0.5 gm	1 gm	1 gm	1 gm
9.	Glycerine	2 ml	2 ml	2 ml	2 ml	2 ml	2ml
10.	Lavender oil	-	-	2-3 drops	2-3 drops	1-2 drops	1-2 drops
11.	Rose water	7 ml	7 ml	7 ml	7 ml	7 ml	7 ml
12.	Phenoxyethanol	0.2 gm	0.2 gm	0.2 gm	0.2 gm	0.2 gm	0.2 gm

2.3 Evaluation Parameter of Body Scrub



Fig No. 4 Formulation Batches of Body Scrub

Table No. 2 Final Batch Parameters

Sr.no	Parameters	Observation
1.	Colour	Brown
2.	Odour	Pleasant
3.	Consistency	Thick
4.	Homogeneity and texture	Creamery, Granular
5.	Wash ability	Easily washable
6.	pH	5.58
7.	Irritation	Non-Irritant
8.	Spread ability	5-7 cm
9.	Foam Ability	Slightly Foam able
10.	Stability	Stable

The assessment of the prepared facial exfoliant was conducted based on a variety of parameters,

including organoleptic characteristics, pH level, irritability, wash ability, grittiness, extrudability,



foamability, and spread ability, all of which met the required standards. The developed product effectively functions as a cleansing exfoliant that enhances skin health and radiance.

Organoleptic properties encompass factors such as

- ▶ Colour
- ▶ Fragrance,
- ▶ Texture
- ▶ Consistency.

1. Spread ability



Fig. No. 5 Spread ability Test

This determines how easily the gel spreads across the skin. A glass slide with a small amount of sample on it is topped by another slide. The amount of weight applied to the slide, how long it took for it to expand, and how much of it was

spread out are all measured. It computed using this formula:

$$L/t \times m = S.$$

2. PH test



Fig. No. 6 pH Test

The pH test is carried out with a pH meter. The range of pH criteria for a good body scrub preparation is between 5-7.

3. Extrudability

10g of formulation taken in to an end closed and the collapsible ointment tube. One other end was kept opened slight pressure was applied closed tube side. The time taken to extrude and the amount of formulation extruded was noted.

4. Foamability

Different quantities of formulation with 10ml of water was mixed and shaken and foam. Observed.

5. Irritability



Fig. No.7 Before Apply Fig. No. 8 After Apply Fig. No. 9 After Washing

Small amount of the formulation. Applied on the skin and was found to be non-irritant Side. The

time taken to extrude and the amount of formulation extruded was noted.

6. Wash ability



Fig. No. 10 Wash ability

Little quantity of scrub was applied over the skin and washed with water.

7. Stability Studies

Stability studies for herbal scrub was performed the product was kept for stability studies for 15

days at two different temperatures which refrigerated and room temperature and the change in its properties was observed. [18]

3. Result and Discussion

Comparative Discussion of Formulations

1. Physical Appearance: F1, F2, and F3 showed a light brown colour, indicating lower concentration of darker herbal ingredients. F4, F5, and F6 appeared darker brown, possibly due to higher concentration of coffee powder, neem powder, or walnut shell powder. F6 had a granular creamy texture, suggesting better exfoliating properties because of scrub particles.

Table. No. 3 Physical Parameter

Sr.no	Formulation	Physical Appearance		
		Colour	Odour	Texture
1	F1	Light brown	Nutty	Creamy
2	F2	Light brown	Nutty	Creamy
3	F3	Light brown	Pleasant, Strong	Creamy
4	F4	Brown	Pleasant, strong	Slightly Creamy
5	F5	Brown	Pleasant	Slightly Creamy
6	F6	Brown	Pleasant	Creamy, Granular

F1 and F2 possessed a nutty odour, likely due to walnut shell powder or natural seed components. F3 and F4 showed a pleasant dark odour, indicating better fragrance blending. F5 and F6 had the most pleasant odour profile, improving user acceptability.

3. Texture Evaluation

F1–F3 were creamy in consistency but comparatively thicker.

F4 and F5 became slightly creamy, improving spread ability over skin.

F6 exhibited creamy granular texture, which is ideal for a body scrub because it combines smooth application with exfoliation.

2. pH Comparison

All formulations had pH values between 5.12–5.58, which is close to normal skin pH F2 showed the highest pH (5.58). F1, F5, and F6 had pH 5.12,



which is most compatible with skin and reduces chances of irritation. The formulations can therefore be considered skin-friendly.

Table. No 4. pH Test

Sr. No	Formulation	pH
1	F1	5.12
2	F2	5.58
3	F3	5.56
4	F4	5.56
5	F5	5.12
6	F6	5.12

3. Spread ability Analysis

Spread ability increased progressively from F1 to F6: F1 showed lowest spread ability (4.5 cm), indicating thicker consistency. F6 showed highest spread ability (6.5 cm), suggesting smoother application and better ease of use. Improved spread ability indicates proper balance of glycerine, aloe Vera gel, and liquid components.

Table. No 5. Spread ability Analysis

Sr. No	Formulation	Spread ability (cm)
1	F1	4.5
2	F2	5
3	F3	5.3
4	F4	5.5
5	F5	6
6	F6	6.5

4. Wash ability

All formulations were easily washable, indicating: Good water compatibility Absence of excessive oily residue Suitable cleansing performance This is an important characteristic for herbal body scrub preparations.

Table. No. 6. Wash ability Test

Sr. No	Formulation	Wash ability
1	F1	Easy to wash
2	F2	Easy to wash
3	F3	Easy to wash
4	F4	Easy to wash
5	F5	Easy to wash
6	F6	Easy to wash

6. Foamability

F1, F2, F4, and F5 showed no foam formation. F3 and F6 exhibited slight foaming, which may improve consumer perception of cleansing activity. Since herbal scrubs are primarily exfoliating products, excessive foam is not necessary.

Table. No.7 Foamability Test

Sr.no	Formulation	Formability
1	F1	No foam
2	F2	No foam
3	F3	Slightly foaming
4	F4	No foam
5	F5	No foam
6	F6	Slightly foaming

7. Skin Irritation Study



All formulations were found to be non-irritant: No redness, no itching, no burning sensation observed. This confirms that the herbal ingredients and pH range were safe for topical application.

Table. No. 8 Skin Irritation Study

Sr.no	Formulation	Skin irritation
1	F1	No irritation
2	F2	No irritation
3	F3	No irritation
4	F4	No irritation
5	F5	No irritation
6	F6	No irritation

9. Stability Study

Stability studies revealed significant differences among batches:

F1 → Change in texture

F2 → Change in odour

F3 → Change in consistency

F4 → Slightly stable

F5 → Moderately stable

F6 → Stable

Among all batches, F6 demonstrated the best stability, indicating optimum ingredient compatibility and balanced formulation.

Table.No.8 Stability Study

Sr.no	Formulation	Observation	Stability
1	F1	Change in texture	Slightly stable
2	F2	Change in odour	Slightly stable
3	F3	Change in consistency	Slightly stable
4	F4	No change	Moderately stable
5	F5	No change	Stable
6	F6	No change	Stable

CONCLUSION

4.1. Summary

This study focused on developing and evaluating a polyherbal body scrub using natural ingredients like Neem, Beetroot powder, Walnut shell powder, coffee powder, Khas khas, Chia seeds, Aloe Vera gel, Rose Water, and Glycerine. The scrub free of chemicals, effectively nourishes skin and reduce dust and dead skin cells. The findings confirmed its safety and efficacy, showing desirable attributes such as appearance, transparency, colour, of Each herbal ingredient contributed unique benefits, enhancing the Scrubs overall effectiveness. Stability tests identified Batch F6 as the optimal formulation the research highlights the potential of herbal extracts in Skincare, emphasizing their biological benefits, cost-effectiveness, and gentleness compared to synthetic scrub.

4.2. Conclusion

Preparation and evaluation of poly-herbal Scrub is a complex process that requires careful consideration of various factors, such as the selection of plant or herbal ingredients required for formulation, their procurement method, and the evaluation of the end or final product for its safety and efficacy. The use of herbal ingredients or plants in scrub formulation offers potential benefits such as improved skin health, reduced environmental impact, nourishing skin. The prepared herbal scrub formulations (F1–F6) were evaluated for physical appearance, pH, spread ability, wash ability, foamability, skin irritation, and stability. All batches showed good consistency and acceptable cosmetic properties. Among all formulations, batch F6 showed the best overall performance.



Evaluation studies showed good appearance, good wash ability, non-irritant to the skin, good foam stability, good dirt dispersion activity from the results, it may be concluded that F6 formulation meets all the requirements of the evaluation parameters among the two other formulations. Among all batches, F6 was considered the optimized formulation because it showed, Better spread ability Pleasant appearance and Odour, light foam ability, Good washing property, No skin irritation Better stability during stability studies.

REFERENCES

1. Gitariastuti NK, Mulyani S, Wrsiati LP. The Effect of Moringa Leaf Powder Addition and Heating Process Temperature on the Characteristics of Body Scrub. *Jurnal Rekayasa Dan Manajemen Agroindustri*. 2020;8(1):18-27.
2. Prathyusha J, Yamani NS, Santhosh G, Aravind A, Naresh B. Formulation and evaluation of polyherbal face scrubber for oily skin in gel form. *International journal of pharmaceutical sciences and drug Research*. 2019 Jul;11(4):126-8.
3. Debbarma D, Moharana PK, Mishra B, Ramana V, Dimple W. Clinical review of deep cleansing apricot scrub: an herbal formulation. *International Journal of Bioassay*. 2015;4(9):4251-253.
4. Sowmya KV, Darsika C, Grace XF, Shanmuganathan S. Formulation and evaluation of a polyherbal face wash gel.
5. Shraddha M, Devshree G, Abhilasha T, GN D. Formulation and Evaluation of Herbo-Mineral Facial Scrub. *Journal of Drug Delivery & Therapeutics*. 2020 May 1;10(3):195-7.
6. Shobha Rani RH. Text book of Industrial Pharmacy drug delivery systems, and cosmetics and Herbal drug technology. Orient Longman Private Ltd, Chennai. 2008:1-3.
7. Chanchal D, Swarnlata S. Novel approaches in herbal cosmetics. *Journal of cosmetic dermatology*. 2008 Jun;7(2):89-95.
8. Kumar, A., S. Barboota, S.P. Agarwal, J.Ali, A.Ahuja, Treatment of acne with special emphasis on herbal remedies expert. *Rev. Dermatol.*, 2008; 3: 111-122.
9. Bathe R, Kapoor R. Transdermal drug delivery system: formulation, development and evaluation-An overview. *Drug Deliv*. 2015;6:7-12.
10. Tortora GJ, Derrickson BH. Principles of anatomy and physiology. John wiley & sons; 2018 May 15.
11. Marieb EN, Hoehn K. Human anatomy & physiology. Pearson education; 2007.
12. Daud FS, Pande G, Joshi M, Pathak R, Wankhede S. A study of antibacterial effect of some selected essential oils and medicinal herbs against acne causing bacteria. *International journal of pharmaceutical science Invention*. 2013 Jan;2(1):27-34.
13. Nguyen T. Dermatology procedures: microdermabrasion and chemical peels. *FP essentials*. 014 Nov 1;426:16-23.
14. Garg A, et al. Spreading of semisolid formulation. *PharmTech*. 2002;9:89-105.
15. Shraddha M, Devshree G, Abhilasha T, GN D. Formulation and Evaluation of Herbo-Mineral Facial Scrub. *Journal of Drug Delivery & Therapeutics*. 2020 May 1;10(3):195-7.
16. Talpekar P, Borikar M. Formulation, development and comparative study of facial scrub using synthetic and natural exfoliant. *Research Journal of Topical and Cosmetic Sciences*. 2016 Jun 28;7(1):1-8.
17. Shruti Satish Garad^{1*}, Chinni Tejas Gajanan on 16 June 2024 DOI: 10.20959/wjpr202413-32869 Volume 13, Issue 13, 712-725.



18. Shreya Pravun Londhe, Jameel Ahmed S. Mulla *World Journal of Drug Targeting 1(1), Jan-Mar, 2023, 38-42

HOW TO CITE: Virbhadra Kale*, Vaishnavi Dhandhe, Dulare I. Ali, Aishwarya Deshmukh, Rahul Bijwar, To Formulate and Evaluate Poly Herbal Cosmetic Scrub using Natural Ingredient, Int. J. of Pharm. Sci., 2026, Vol 4, Issue 5, 7022-7032. <https://doi.org/10.5281/zenodo.20403398>

